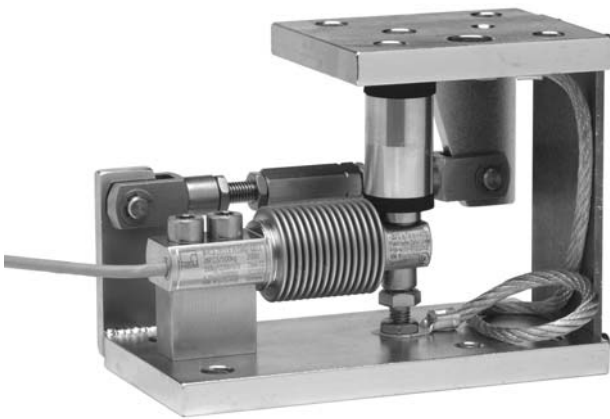


Z6AM

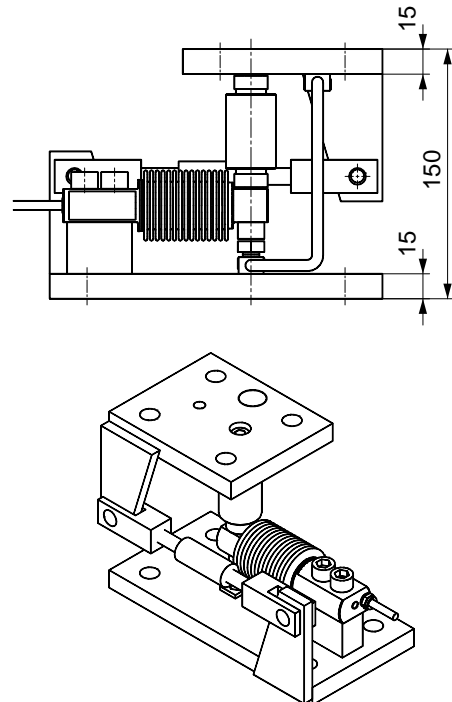
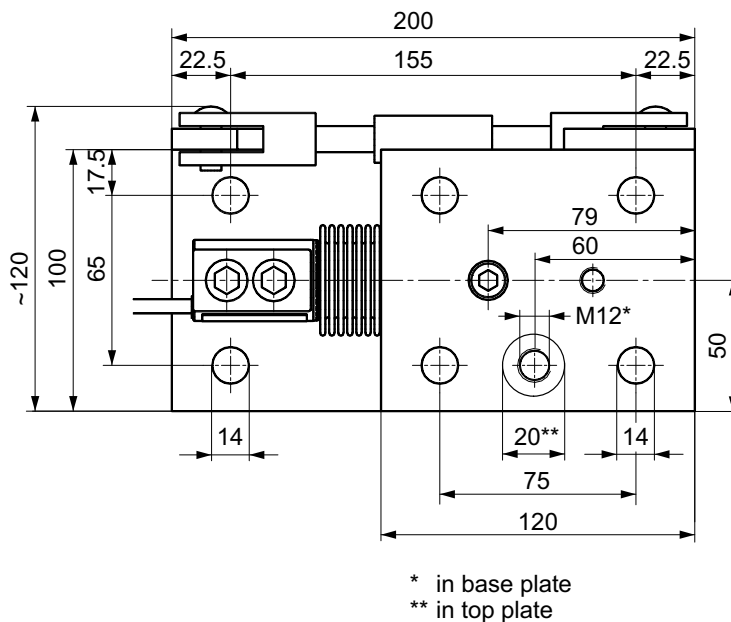
Weighing module
for 50 kg ... 500 kg

Special features

- Equipped with load cell Z6F... class C4 according to OIML R60
- With Overload stop and Transverse control arm
- Maintenance-free
- Compact installation at minimum installation height
- Easy installation
- Galvanized material and stainless steel version available
- Self-restoring due to pendle bearing
- Prepared for Lift-off securing device
- Ex protection designs as per IECEx, ATEX, FM (US) and EAC (optional)



Dimensions (in mm; 1 mm= 0.03937 inches)



Specifications of the weighing module Z6AM...

Maximum capacity	kg	50	100	200	500
Limit load	% of Maximum capacity	150			
Restoring force (at 1 mm side offset)	% of Applied load	2.8			
Maximum permissible side offset transverse to the control arm axis	mm	± 3.5			
Maximum permissible horizontal force in the control arm direction	kN	5			
Material		Galvanized or Stainless steel			
Weight (depending on the version, incl. load cell)	kg	8...9			
Adjustment range of the overload stop	mm	≤0.35	≤0.25	≤0.45	≤0.8

For technical data and additional information on the appropriate load cells, please refer to the Data sheet Z6F...

Options

Explosion protection versions to IECEx, ATEX and FM (USA)

AI1/21 IECEx+ATEX Zone 1/21 + FM intrinsically safe, II 2G Ex ia IIC T6/T4 Gb, II 2D Ex ia IIIC T125°C Db*

AI2/21** IECEx+ATEX Zone 2/21 not intrinsically safe, II 3G Ex ec IIC T6/T4 Gc, II 2D Ex tb IIIC T125°C Db*

* With EU type examination certificate (BVS13ATEX E 108 X) and IECEx Certificate of Conformity (IECEx BVS 13.0109 X)

** Option AI2/21 IEC + ATEX zone 2/21 includes zone 2/22


Explosion protection versions to EAC (Eurasian Economic Union, with the member states: Russia, Belarus, Armenia, Kazakhstan, Kyrgyzstan)

R1/21 EAC Zone 1/21 TR ZU 012/2011 Ex certificate, 1 Ex ia IIC T6/T4 Gb X / Ex ia IIIC T125°C Db X***

R2/21 EAC Zone 2/21 TR ZU 012/2011 Ex certificate, 2 Ex nA IIC T6/T4 Gc X / Ex tb IIIC T125°C Db X***

*** With certificate "СЕРТИФИКАТ СООТВЕТСТВИЯ № TC RU C-DE.ГБ08.B.01138"

Survey of ordering codes

Weighing module Z6AM available with different options									
K-Z6AM									
K-Z6AM	Code		Option 1: Material						
	V		Galvanized						
	R		Stainless steel						
	Code		Option 2: Accuracy class						
	C4		Class C4						
	C6		Class C6 [not with Option 3 = 550]						
	Code		Option 3: Capacity						
	50		50 kg						
	100		100 kg						
	200		200 kg						
	500		500 kg						
	Code		Option 4: Ex protection						
	N		No explosion protection						
	AI1/21		IECEX-ATEX zone 1/21 and FM						
	AI2/21		IECEX-ATEX zone 2/21						
	R1/21		EAC zone 1/21						
	R2/21		EAC zone 2/21						
	Code		Option 5: Cable length						
	A		3 m						
	B		6 m [not with Option 2 = C6]						
	C		12 m [not with Option 2 = C6]						

Codes on grey background identify the standard version which is available from stock at short notice.

K-Z6AM - - - - -

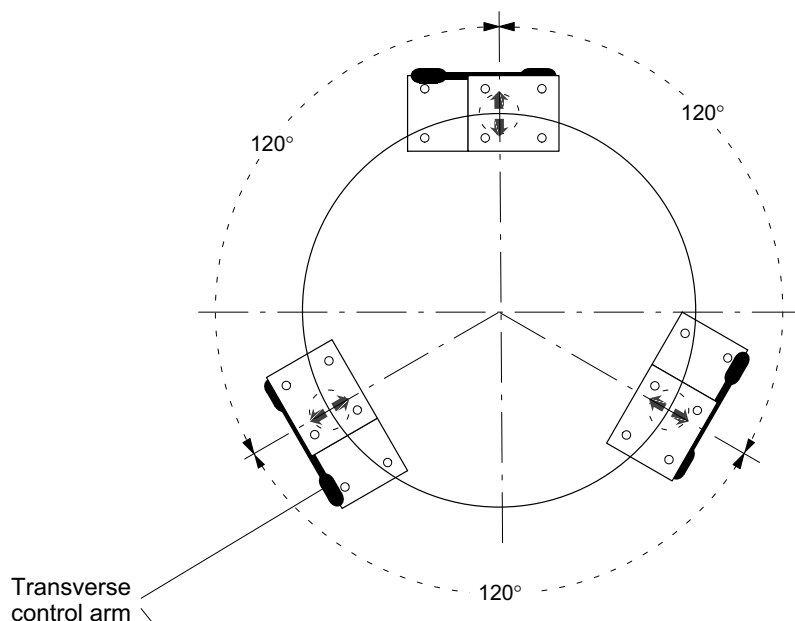
Not all codes can be combined with one another. Take note of the conditions in square brackets!

Scope of supply

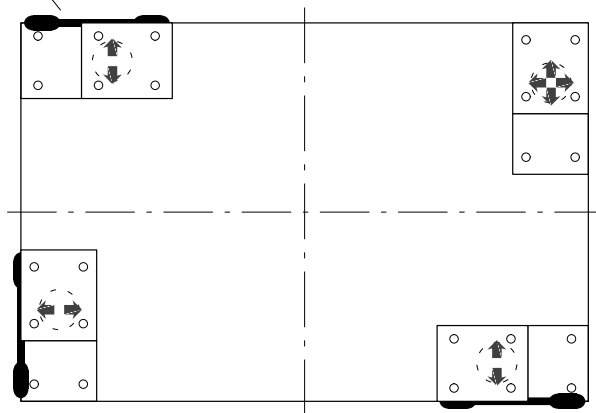
Weighing module with load cell Z6FC4/... (Standard) or Z6FC6/... (Option), complete mounted with transverse control arm, pendle support and ground wire

Mounting examples for weighing modules with Transverse control arms

Arrangement of the weighing modules below cylindrical tanks



Rectangular arrangement of the weighing modules below tanks



Attention

The represented bearing arrangements consider only weighing-technical criteria. The carrying and stability must be examined and guaranteed in each case by the operator.

Subject to modifications.
All product descriptions are for general information only. They are not to be understood as a guarantee of quality or durability.

托驰（上海）工业传感器有限公司
上海市嘉定区华江路348号1号楼707室
电话: +86 021 51069888
传真: +86 021 51069009
邮箱: zhang@yanatoo.com
网址: www.sensor-hbm.com

measure and predict with confidence

